

UNITED STATES PUBLIC LAND SURVEY CORNER CERTIFICATE FOR

Land survey monuments situated in Section 28, Township 105 North, Range 41 West, of the Fifth Principal Meridian, Murray County, Minnesota..

Previously recorded in N/A in County Recorder's Office.

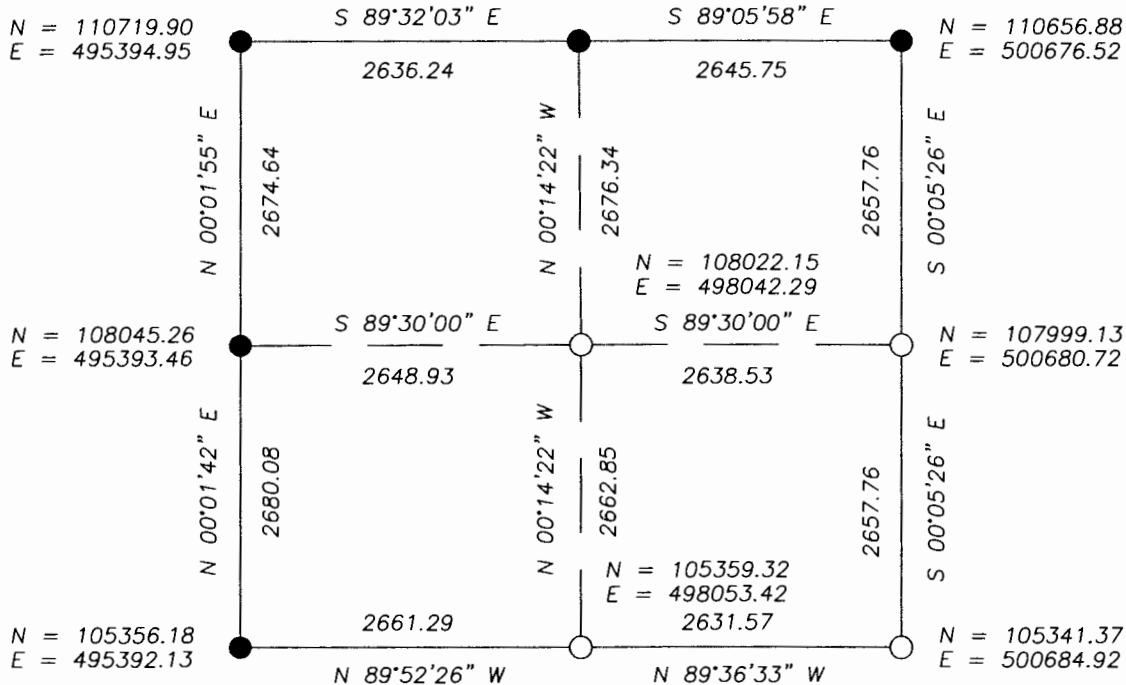
(Show reason for preparing this certificate, the evidence and detailed procedure used in establishing the corner position & monumentation found or placed.)
 MONUMENT DESCRIPTION AND REMARKS: On September 28, 2007 searched with backhoe for South 1/4

corner and found no evidence of corner. County Highway Department records indicate no corner information.

I accepted C of Township Road in line with fence to North as corner and set a 1" Iron Pipe with survey cap 23008 for corner. I also set 1" Iron Pipe at center of section by intersecting opposing quarter corners as per PLS Instructions. Dug with backhoe for Southeast corner where there were various stones of various sizes in area but none had any "X" or point or wood near any stone. County Highway Records had no information for this corner. I did not accept any of the stones found. The best evidence is centerline intersection of roads. I set a 1" Iron Pipe with survey cap 23008 at C C. We did not find East 1/4 corner of Section so set a 1" Iron Pipe with survey cap 23008 midway and on line between Northeast and Southeast corners. This fit occupation line west and east. County Highway records had no information for this corner.

MURRAY COUNTY COORDINATES NAD 83 (1996) PLAN-VIEW

N = 110698.47
E = 498031.10



I hereby certify that this land surveying document was prepared and related survey work was performed by me or under my direct supervision and that I am a duly licensed Land Surveyor under the laws of the State of Minnesota.

Perry L. Zieske 10-2-07
 Signature Date
 Perry Zieske
 License number 23008

Corners to be Indexed

Corners	Section	Township	Range
S 1/4	28	105	41
CTR.	28	105	41
SE	28	105	41
E 1/4	28	105	41